

**IMMEASURABLY  
MORE**





# DEAR CHURCH FAMILY,



**I BELIEVE THAT GOD HAS PROVIDED US WITH A UNIQUE OPPORTUNITY TO IMPACT THE LIVES OF OTHERS.** As we focus our attention on our capital campaign, **Immeasurably More**, I need you to reflect on how God has blessed your life and our church. Certainly, we cannot help but feel gratitude and anticipation as we seek God's will.

I am confident that our **Immeasurably More** campaign will open the doors of opportunity for Versailles Baptist Church. With the success of this campaign, we will be able to effectively expand our worship capacities, children's ministries, student ministry, and our discipleship and outreach programs.

We are now challenged to give sacrificially, over and above our current giving, for the next three years. This campaign requires diligent prayer for God's leading, and I genuinely

believe that the Versailles Baptist Church faith family is ready for the challenge that this campaign offers. Let us boldly believe in God's provision and grace.

Please examine the enclosed brochure carefully. With a thankful heart filled with faith, I ask that you consider your part in this campaign. What you give is a personal decision between you and the Lord. What we accomplish together will benefit many. May the Lord bless you and keep you, and may His name be glorified as we step into the **Immeasurably More** that He has in store for us.

Til All Hear,

*Connor Alford*

**PASTOR CONNOR ALFORD**



**Versailles**  
BAPTIST CHURCH



# PROJECT HIGHLIGHTS

**THE PURPOSE OF THIS CAMPAIGN IS TO MAKE ROOM FOR THE PEOPLE GOD IS BRINGING TO VERSAILLES BAPTIST CHURCH—AND FOR THE LIFE CHANGE WE PRAY WILL FOLLOW.**

## **Children/Preschool Discipleship**

- New state of the art secure space (from 4,800 sq ft to 7,800 sq ft)
- Room to accommodate 90 preschoolers and 145 kids (currently holds 60 preschoolers and 85 kids)
- State of the art special needs/mother's room
- Large outside playground area

## **Student Discipleship**

- Increased worship space
- 7 classrooms (currently have 4 classrooms)

## **Worship**

- 800 seat traditional sanctuary (currently have 500 seats)
- Open foyer/corridor space for transition times between services
- New total size – approximately 13,600 sq ft
- Covered drop off outside the sanctuary

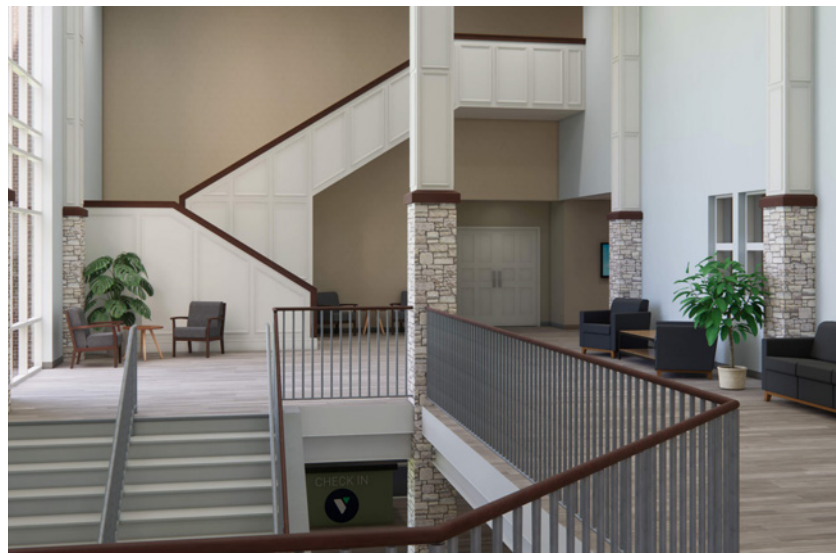
## **Adult Discipleship**

- 28 total adult classrooms
- 6 to 7 senior adult classrooms on sanctuary level

## **Future Possibilities**

- Coffee serving area
- History room
- Covered drop off on Green Street
- Modern façade on current education building on Green Street side
- Increased office space
- Increased parking spaces across Locust Street





# TESTIMONIALS

**SANDY HESTER** – “This campaign means we get to participate in another project together under God’s leadership. I have been in awe over the years of the many ways God has directed this congregation for the advancement of His kingdom – Biblical preaching, baptisms, staff changes, debt retirement, mission endeavors, local ministry opportunities, children and youth programs, Hispanic and Congolese congregations, and much more. Each of these opportunities gives us a reason to praise God and partake in His legacy for our church. This campaign is a continuation of God leading us to have a vision for future members and I am grateful, excited, and delighted to be a part of it.”

**SHANNA JAGGERS** – “Versailles Baptist has been such a blessing to our family. Being able to contribute to our new building project is an exciting opportunity to participate in this shared vision for the future of our church. I want Versailles Baptist to be able to bless many more families, point them to Jesus, and glorify God for generations to come.”

**LEE HICKS** – “It is now our joy to give sacrificially to the building of a larger launching pad for His expanding kingdom work here and abroad. This new structure is not eternal, but every soul saved by those launched from this base is. From the abundance of your blessed heart, give till your heart glows.”

**CHRIS DEARINGER** – “This capital campaign is a wonderful opportunity for us to come alongside one another in a shared goal of expanding our church building through both our prayers and our giving. As a congregation, we have always been called to something greater than ourselves, and this campaign is a tangible expression of that calling. I’m excited to see how this expansion enables us to serve and reach our community more effectively, and how God will use it to build His Kingdom in ways we can’t yet imagine. I’m grateful to be part of a church body that steps forward together in faith.”

# OUR PRIMARY GOAL IS 100% ENGAGEMENT

**GINA CREWS** – “When we moved to Versailles, my heart was heavy thinking about leaving my church family of 36 years. We started visiting churches, and when we came to VBC, we knew it was “home”. The friendly people, the word of God preached, the Sunday school lessons taught, the worship music, it all was simply an answer to our prayers! We feel so blessed to walk alongside like-minded believers and are so excited that our children and grandchildren are making friends and growing in their Christian walk.”

**ALISON HUMSTON** – “Versailles Baptist Church has been such a blessing in my life and in the lives of my children. It has given us a place where we feel loved, supported, and encouraged in our faith. My kids have grown up surrounded by people who care for them, guide them, and help shape them into kind and compassionate individuals. The friendships, lessons, and sense of belonging they have gained through our church mean more to our family than words can express. Without VBC, our lives would truly be missing a source of strength, joy, and community.”

We believe this is a defining moment—a season where every heart at Versailles Baptist Church joins together in faith and purpose. Our desire is for each person to take bold steps forward in their walk with Christ, deepening discipleship and embracing a spirit of generosity. We are praying for God to move powerfully, opening our hearts wide so that we can fully become who He created us to be together.

# QUESTIONS & ANSWERS

## WHAT IS THE PURPOSE OF THE CAMPAIGN?

The purpose of our campaign is to add additional worship space to accommodate for growth in worship attendance while also building a children's ministry area that can welcome more young families. Renovated space will also allow for more student, discipleship, and gathering space for the rest of the church!

## HOW WILL BUILDING HELP US REACH OUR COMMUNITY FOR CHRIST?

Our new facilities will have more space for worship, classrooms, fellowship, and student activities. All our ministries will benefit and have room to grow! Continued growth on our campus will prayerfully lead to continued expansion of ministries, missions, and local outreaches for the sake of the gospel.

## HOW WILL WE PAY FOR THIS?

We believe wholeheartedly that God has given us a vision to reach the lost in Woodford County and Central Kentucky for Christ. We have faith that our Versailles Baptist Church faith family will rise to the challenge He has set for us. With God's help and our sacrificial giving, we will reach our goals and build a facility that will help us lead the way for future generations.

## HOW CAN I HELP?

- First and foremost, please pray regularly for our **Immeasurably More** campaign.
- Participate in the events and meetings. Make a commitment to learn as much as you can about the campaign and the vision it will help us realize.
- Give sacrificially. The vision God has granted us can only be achieved through faith and sacrifice. We have the privilege to be a part of growing His Kingdom!



VBC  
**KIDS**  
CHECK-IN



BIRTH-K GRADES 1-5



# CREATIVE WAYS TO GIVE

**DECREASE:** Are there things in your life you can take advantage of less frequently? Maybe it's fewer coffee runs or one less dinner out each week. By decreasing a weekly expense, regardless of what it might be, you can save a significant amount to contribute.

**DELAY:** Are there plans you might be making that involve a financial commitment? If so, prayerfully ask God about delaying those plans and using the extra income to contribute.

**DO MORE:** Often, there are creative ways to save money. Maybe it's been a while since you got a quote for an existing service (ie., cell phone and cable service). Perhaps you could do some extra comparison or bargain shopping to save funds. For your kids, it could be as easy as saving extra change to give.

**DONATE:** A great way to contribute is to give existing assets. Giving your assets to the church and letting us sell them eliminates potential capital gains taxes and may increase after-tax proceeds. Please contact the church office for more guidance before committing an asset gift in order to determine its viability for liquidation.

## TYPICAL COMMITMENTS YOU CAN MAKE OVER A 156-WEEK PERIOD

WEEKLY	MONTHLY	YEARLY	3-YEAR
\$2000	\$8,667	\$104,000	\$312,000
\$1000	\$4,333	\$52,000	\$156,000
\$500	\$2,167	\$26,000	\$78,000
\$300	\$1,300	\$15,600	\$46,800
\$100	\$433	\$5,200	\$15,600
\$75	\$325	\$3,900	\$11,700
\$60	\$260	\$3,120	\$9,360
\$50	\$217	\$2,600	\$7,800
\$40	\$173	\$2,080	\$6,240
\$30	\$130	\$1,560	\$4,680
\$25	\$108	\$1,300	\$3,900
\$20	\$87	\$1,040	\$3,120
\$15	\$65	\$780	\$2,340
\$10	\$43	\$520	\$1,560
\$5	\$22	\$260	\$780

# BUILDING AND PLANNING FOR THE FUTURE TAKES WISDOM AND FAITH.

Building and planning for the future takes wisdom and faith. The leadership of Versailles Baptist Church has been seeking wisdom and praying earnestly to hear God's will in this process. We've set three prayerful goals for this campaign. Our first goal is \$2.5 million—a significant step forward that invites each of us to participate through prayer and generous giving. Our second goal of \$3.5 million stretches us further, calling us to trust God in new ways. Our third goal, \$5 million, reflects what's possible when we come together in faith and generosity. We worship a generous God, and it's a joy to celebrate what He can accomplish through His people.

**PLEASE JOIN US IN PRAYING FOR GOD'S PROVISION AND GUIDANCE AS WE TAKE THIS STEP OF FAITH TOGETHER. EVERY GIFT MAKES AN ETERNAL IMPACT!**

## IMMEASURABLY MORE

Full Name

Phone

Email

**I/WE PLAN TO GIVE ACCORDINGLY:**

Giving above my/our tithes

\$ **SAMPLE**

Weekly  Monthly  Yearly  One-time Gift

**MY/OUR 3-YEAR TOTAL COMMITMENT:**

\$

I/we will begin giving on:

**FOR GIFT ASSETS OTHER THAN CASH:**

Description \_\_\_\_\_

Approximate Value \$ \_\_\_\_\_

Signature(s)

NOTE: This is a statement of intent and may be altered as circumstances warrant.

VERSAILLES BAPTIST CHURCH  
125 E GREEN ST.  
VERSAILLES, KY 40383

RETURN SERVICE REQUESTED

NON-PROFIT ORG.  
US POSTAGE PAID  
PERMIT NO. 56  
VERSAILLES KY 40383

